

**The Sub-Orbital** Offered **EXCLUSIVELY**  
at the NASTAR<sup>SM</sup> Center

# SPACE LAUNCH

Experience



125 James Way, Southampton, PA 18966 USA • [www.NASTARcenter.com](http://www.NASTARcenter.com)

**Suddenly,**  
**It All Seemed**  
**Very Real...**



**T**he sun was just beginning to pour into the NASTAR<sup>SM</sup> Center's lobby when I arrived for the space launch experience. After I had a chance to meet my fellow trainees, our instructor gave us a tour. **Wow!** This place was definitely set-up for intense training, but it looked like it was seriously fun too! With the medical check-in and initial interview completed, **suddenly it all seemed very real.**

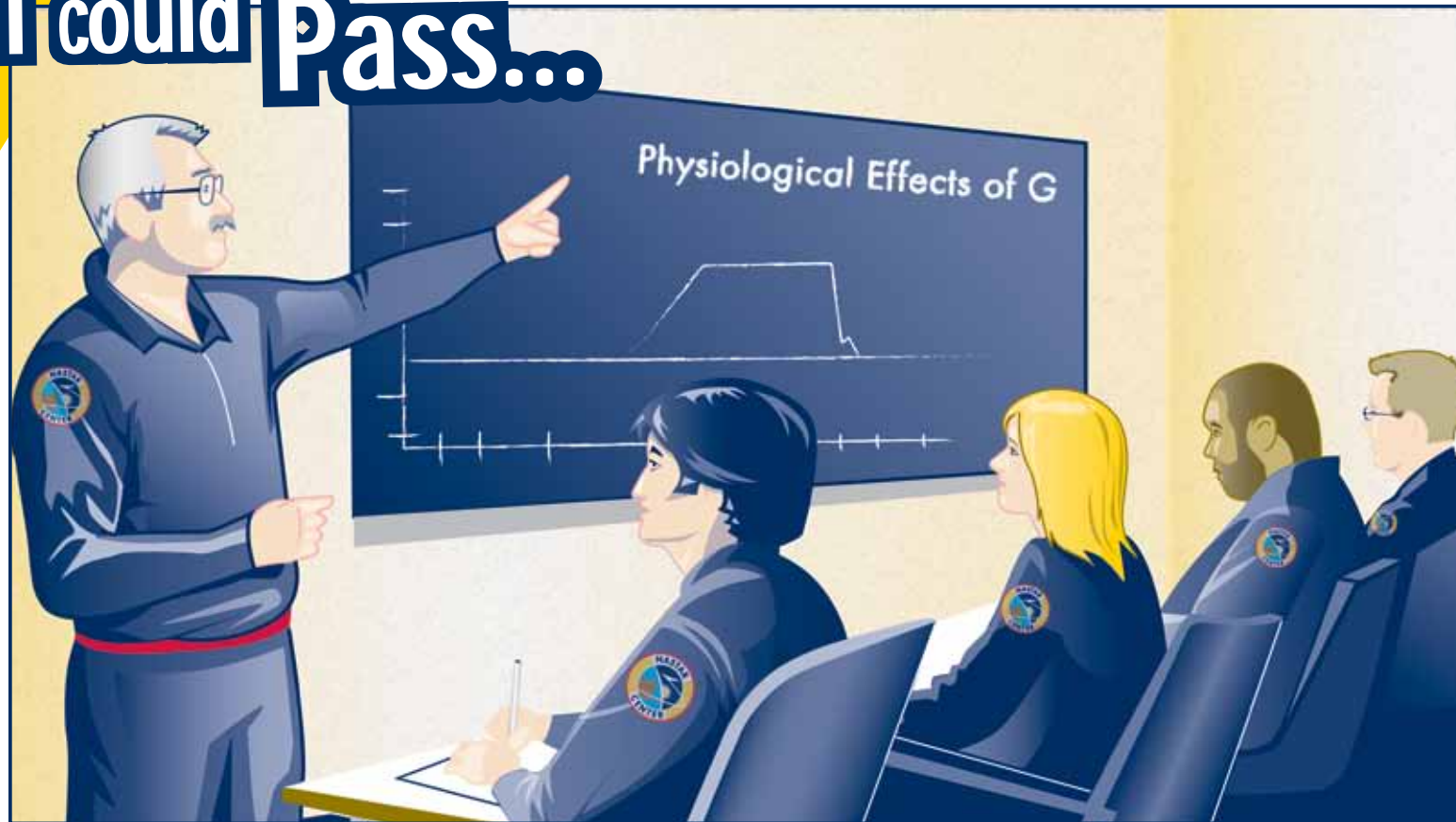


# I Could See The **EXCITEMENT** Building...



**W**e got into our custom NASTAR<sup>SM</sup> Center flightsuits and I could see the excitement of the group building. **Seeing the big centrifuge up close took my breath away.** It also made me determined to get the most out of the upcoming classroom training, so I'd be ready to pull some serious G's. **I was motivated to learn everything I could, to keep up with my teammates.**

# I Was **CONFIDENT** I could Pass...



We got an overview of our mission and some really in-depth instruction. It was a lot to take in, but our instructor was great at explaining all the technical concepts. After a little while, **I started feeling really comfortable saying things like “G-LOC” and “Anti-G Straining Maneuver.”** By the time we finished the class, I was confident that I could pass my G tolerance pre-qualification in the GYROLAB, then get into the **Space Training Simulator.**

# Mission 1

## G-TOLERANCE

Exterior view of the Gyrolab



**O**ur first day ended with a few G-Tolerance flights in the **GYROLAB** and I passed with flying colors! Not everyone was so lucky, though – one guy on our team will have to come back another time, after some conditioning and working out, to try to go on to the next step. For the rest of us, **we were getting closer and closer to the “launch”!**

Interior of the Altitude Chamber



# Mission 2

## HIGH ALTITUDE



**A**s we “flew” to 16,000 feet in the high-altitude chamber, **I fought the giddiness brought on by hypoxia.** I had a little difficulty putting blocks and circles into the correct holes in a box. My mind wandered back to what the flight attendant said on my flight here – “If we experience a sudden loss of pressure...” Now I know what they were talking about!

# Mission 3

## SPACE LAUNCH



Exterior view of the ATFS-400

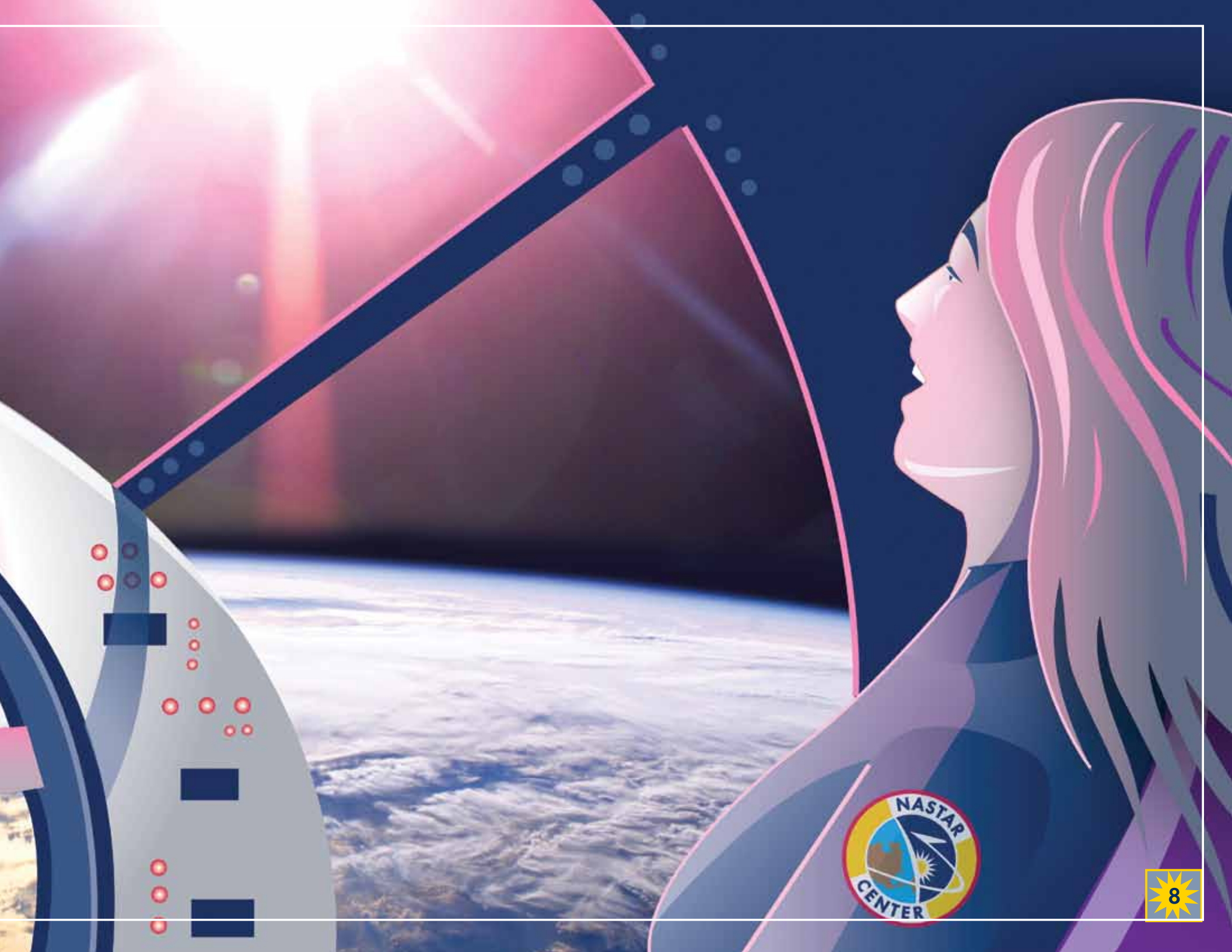


I could feel my own pulse pounding as I watched my teammate on the control room's monitors. Although **his face looked like it had aged ten years as he strained against the G forces**, his ECG pattern wasn't outside expected ranges and he kept giving us a "thumbs up" to let us know he was okay. **It was going to be my turn soon** and I was getting really excited... **and a little anxious too!**

# ...It was Everything I Thought It Would Be...

**T**he launch itself was like nothing I'd ever felt before. Thankfully, my training kicked in right away and I automatically began managing what the G forces were doing to my body, allowing me to focus on this unique thrill. **The view from the capsule was everything I thought it would be** and I couldn't wait to share my experience with the rest of the team.





# A Dream Come TRUE!



**T**o train like an astronaut and experience what very few people have done... *it was a dream come true for me!* Our instructor was proud of us for successfully completing this mission and I was proud of myself, too. At first I wasn't sure, **but now I can't wait to come back again and fly an even tougher launch profile, so I can someday be ready for the real thing...A LAUNCH INTO SPACE!**

The NASTAR<sup>SM</sup> Center offers 1-, 2-, and 3-day experiences, designed to familiarize you with the basics of space launch and reentry, and to challenge you so you can determine your physical and mental fitness to train for an actual launch into space. The next step, a Sub-Orbital Space Launch Training course, occurs in conjunction with a specific space flight provider's program. It is **STRONGLY** recommended that all prospective space launch participants begin with the Sub-Orbital Space Launch Experience.

---

## Sub-Orbital Space Launch Experience

*Offered as a stand-alone program for entertainment and/or to determine your fitness and desire to continue with a specific space flight provider's training program.*

- Medical Certification Not Mandatory
- Introductory Academic Preparation
- G Tolerance Prequalification to 2.5 Gs
- Hypoxia Demonstration Flight to 16,000 ft.
- Rapid Decompression Demonstration at 16,000 ft.
- Simulated Space Launch to 3.5 Gs
- Mission Completion Certificate

## Sub-Orbital Space Launch Training

*Offered in conjunction with a specific space flight provider's program.*

- Modified FAA Class III Medical Certification Required
- Intensive Academic Preparation
- G Tolerance Prequalification up to 6 Gs
- Hypoxia Demonstration Flight to 25,000 ft.
- Rapid Decompression Demonstration at 22,000 ft.
- Simulated Space Launch up to 4-6 Gs  
(designed to model a specific space vehicle's flight profile)
- Launch Readiness Certificate for Specific Space Launch Program

---

For more details, please contact The NASTAR<sup>SM</sup> Center at 866-482-0933 or email [info@NASTARcenter.com](mailto:info@NASTARcenter.com)

**Credits** Story Eileen Lloyd • Art Direction Rob Lloyd • Illustration and Design Chris Snee • Editor-in-Chief Alex Howerton • Produced by the Creative Visualization Lab

The Sub-Orbital SPACE LAUNCH Experience ©2007 NASTAR<sup>SM</sup> Center. All rights reserved.



NASTAR  
C E N T E R

125 James Way, Southampton, PA 18966 USA

[www.NASTARcenter.com](http://www.NASTARcenter.com)